

# BIOTECH CENTER

FISCHAMEND / AUSTRIA



## LOCATION FISCHAMEND / AUSTRIA

### MODERN BIOTECH CENTER

The modern Biotech Center has all the requirements for an internationally recognized facility in which interdisciplinary knowledge exchange is part of everyday practice.

### OPTIMUM LOCATION

The proximity to the Vienna International Airport and university research facilities makes it easier to work with experts from a wide variety of countries and disciplines.

### NEW QUALITY JOBS

The Biotech Center is creating up to 50 new, highly qualified jobs at the LOBA site. In the longer term, further innovative product developments are planned and will continuously increase the need for employees.

### KNOW-HOW FROM AUSTRIA

With setting up the Biotech Center, LOBA solely relies on the expertise of companies from Austria.

### ENVIRONMENT AND SUSTAINABILITY

For the construction of the Biotech Center, all possibilities for the use of sustainable resources are taken into account (e.g. rock wool insulating material for the facade). The use of the latest technology leads to efficient waste water treatment, energy savings (WFI generation) and heat recovery (ventilation systems). In addition, sustainable energy generation through the preparation of sufficient photovoltaic areas is planned. By commissioning only Austrian and Central European companies, the CO<sup>2</sup> footprint can be kept as small as possible. The use of digitization under the aspect of Industry 4.0 ensures efficient and resource-saving work.

## FACTS STATE OF THE ART TECHNOLOGY

High-tech GMP production facility with an area of 2,500m<sup>2</sup> designed for state-of-the-art production of biotechnological products based on bacteria and yeast covering the whole upstream and downstream processing.

### GENERAL

- Semi-automated processes (PCS7) and automation development in-house

### UPSTREAM

Culture/Organisms: Bacteria and Yeast

Seed Fermentation: 10 L scale (stainless steel)

Main Fermentation: 1000 L scale (stainless steel)

Cleanroom class: D

### DOWNSTREAM

- Ultimate flexibility through established ball room concept
- Relevant downstream activities:
  - Protein extraction and renaturation
  - Ultra-/diafiltration
  - Preparative Chromatography
  - Pegylation
  - Bulk filling of drug substance

Cleanroom class: C

### R&D-LABORATORY – UPSTREAM/DOWNSTREAM

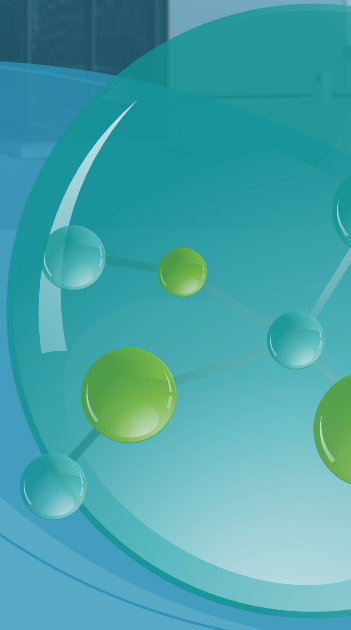
- Verification and/or optimization of established processes
- Development of new processes (10 L scale)
- Support scale-up activities and transfer from pilot plant to industrial scale

### ANALYTICS

- All up-& downstream activities are supported by our analytical development and quality control department:
  - Method development (LC-DAD, LC-RI, HR-LC-MS/MS, GC-FID, GC-MS, ICP-OES, SDS-PAGE, immunoassays)
  - GMP/GLP-compliant testing of raw materials, intermediates and final product
  - Cleaning validation
  - Microbiological analysis

With an innovative Biotech Center in the heart of Europe, LOBA is striving for a major leap in technological innovation in the production of high-quality active pharmaceutical ingredients. The plan of the renowned company based in Fischamend (Vienna area) is to expand its production portfolio in the field of biotechnology. A GMP production facility for biopharmaceuticals and a new state-of-the-art GMP analysis laboratory will be operational in 2025 with an investment volume more than one hundred million Euro.





# BIOTECH CENTER

FISCHAMEND / AUSTRIA

📍 Fehrgasse 7  
2401 Fischamend, Austria

☎ +43 (0)2232 77391-0

@ sales@loba.co.at

[www.loba.co.at](http://www.loba.co.at)

IMPRESSUM:  
Medieninhaber: Loba Feinchemie GmbH,  
Fehrgasse 7, 2401 Fischamend, Austria  
Druck: druck.at Druck- und  
Handelsgesellschaft mbH 2544  
Leobersdorf, Austria